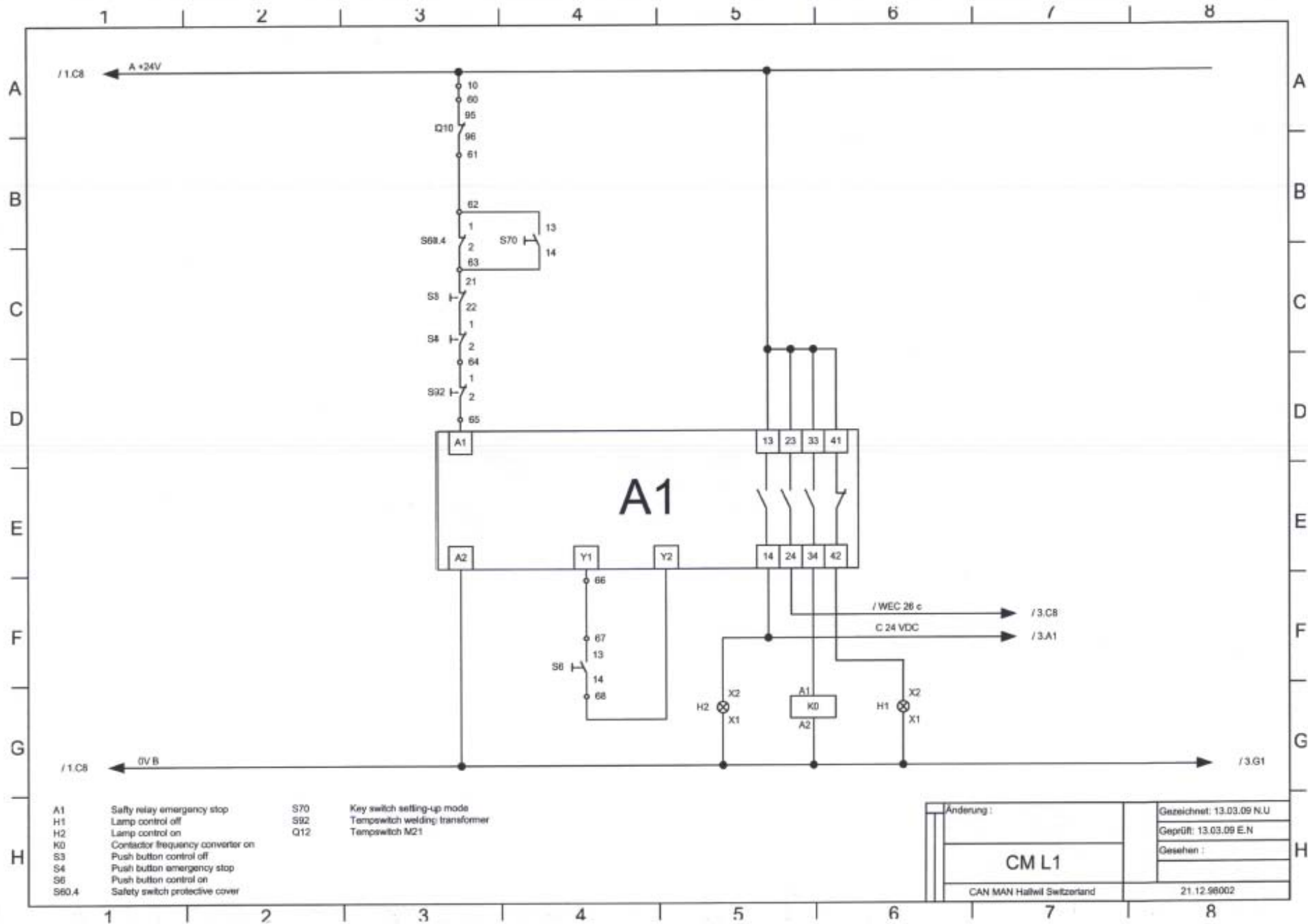


- F2 Microfuse 250mA 400 V
- F3 Microfuse 500mA 18 VAC
- F4 Microfuse 500mA 18 VAC
- G1 Power supply unit
- Q1 Main circuit breaker
- Q4 Control circuit breaker
- T4 Synchronisation transformer 18-0-18 VAC

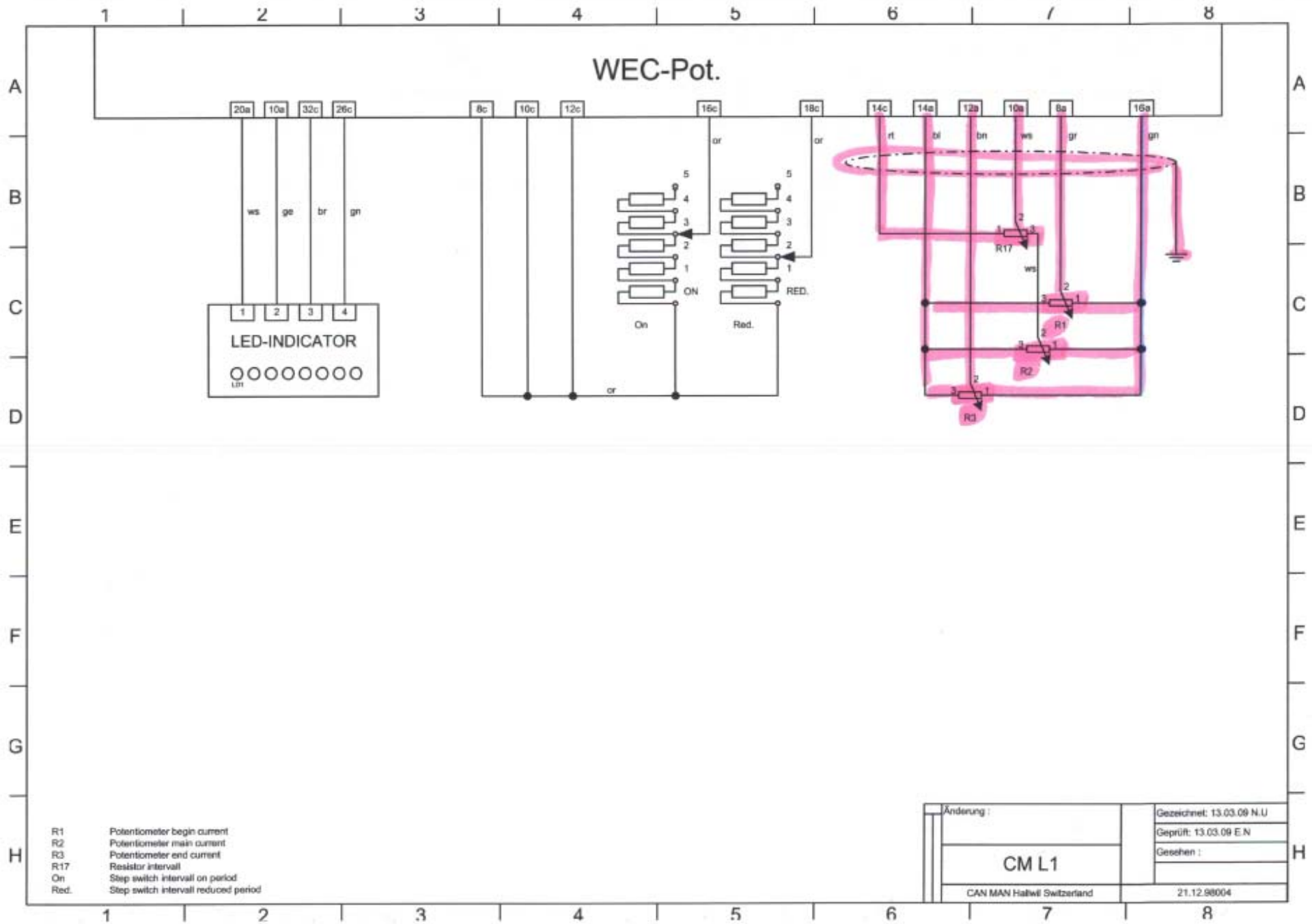
Änderung:	Gezeichnet: 13.03.09 N.U
CM L1	Geprüft: 13.03.09 E.N
CAN MAN Hallwil Switzerland	Gesehen:
	21.12.98001



- | | | | |
|-------|----------------------------------|-----|--------------------------------|
| A1 | Safety relay emergency stop | S70 | Key switch setting-up mode |
| H1 | Lamp control off | S92 | Tempswitch welding transformer |
| H2 | Lamp control on | Q12 | Tempswitch M21 |
| K0 | Contactor frequency converter on | | |
| S3 | Push button control off | | |
| S4 | Push button emergency stop | | |
| S6 | Push button control on | | |
| S60.4 | Safety switch protective cover | | |

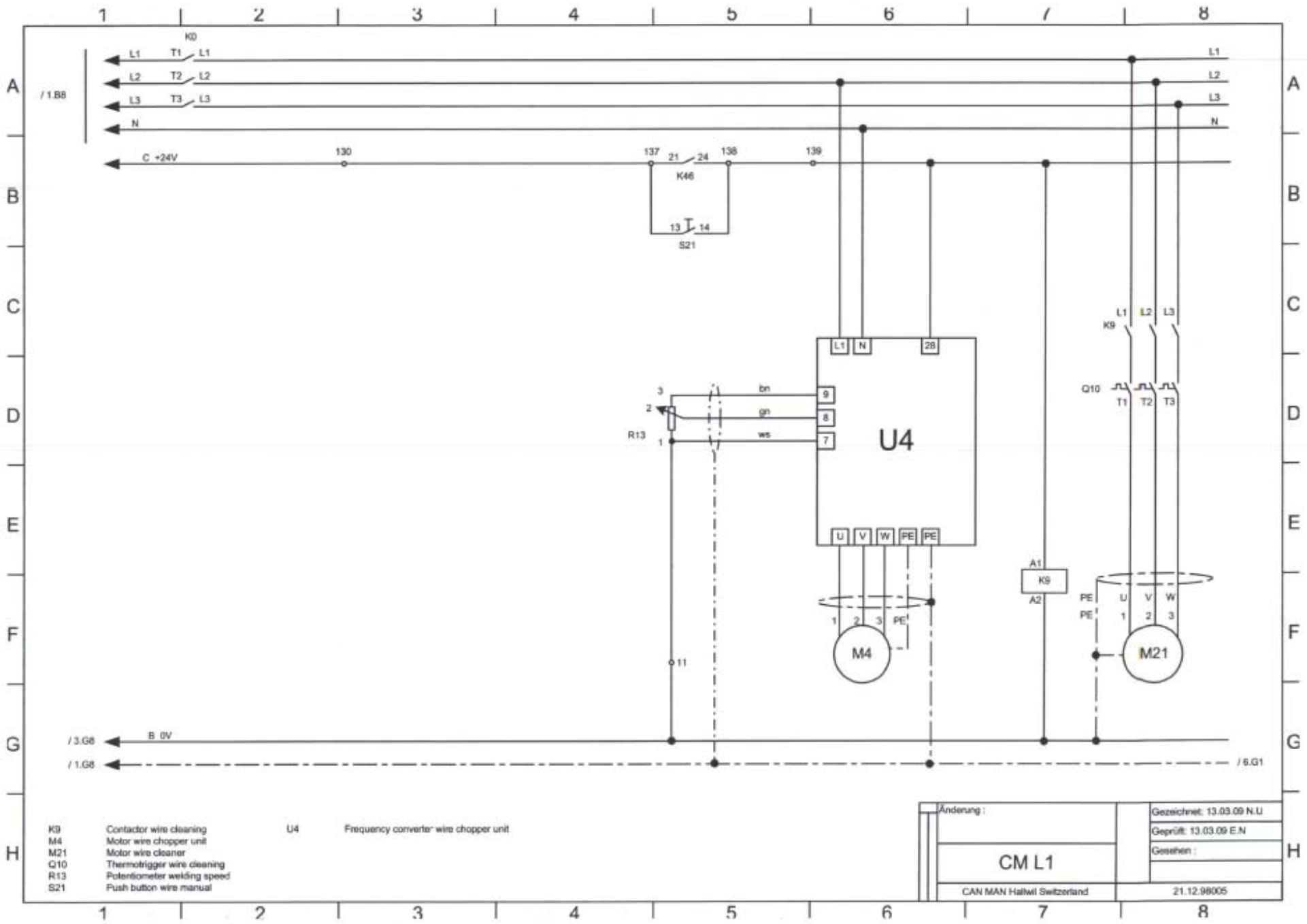
Änderung :	Gezeichnet: 13.03.09 N.U
	Geprüft: 13.03.09 E.N
	Gesehen :
CM L1	
CAN MAN Hallwil Switzerland	
21.12.98002	

WEC-Pot.



- R1 Potentiometer begin current
- R2 Potentiometer main current
- R3 Potentiometer end current
- R17 Resistor interval
- On Step switch interval on period
- Red. Step switch interval reduced period

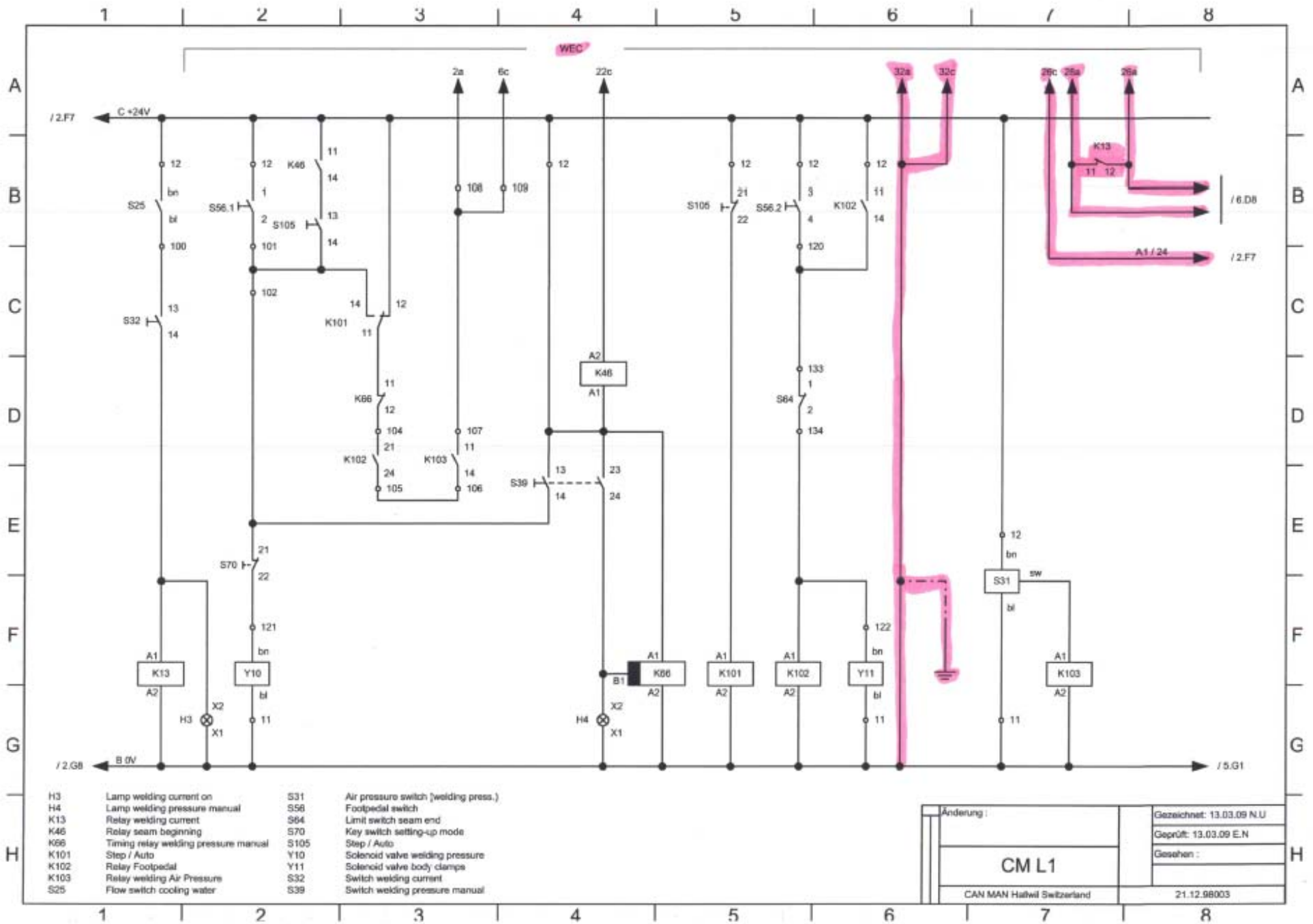
Änderung:	Gezeichnet: 13.03.09 N.U
CM L1	Geprüft: 13.03.09 E.N
CAN MAN Halwil Switzerland	Gesehen:
	21.12.98004



- K9 Contactor wire cleaning
- M4 Motor wire chopper unit
- M21 Motor wire cleaner
- Q10 Thermotrigger wire cleaning
- R13 Potentiometer welding speed
- S21 Push button wire manual

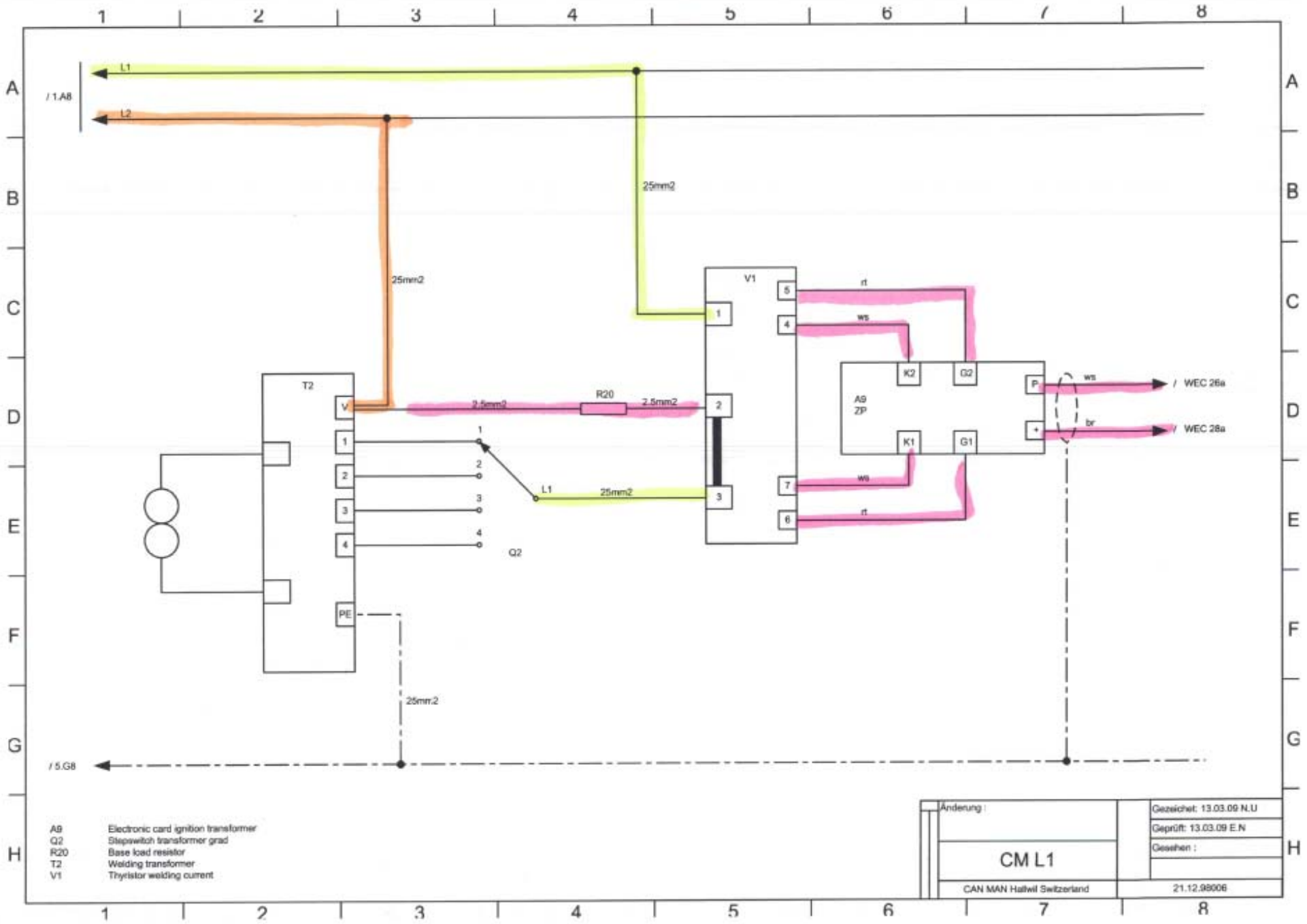
U4 Frequency converter wire chopper unit

Änderung:	Gezeichnet: 13.03.09 N.U
	Geprüft: 13.03.09 E.N
	Gesehen:
CM L1	
CAN MAN Halwil Switzerland	
21.12.98005	



- | | | | |
|------|--------------------------------------|------|--------------------------------------|
| H3 | Lamp welding current on | S31 | Air pressure switch (welding press.) |
| H4 | Lamp welding pressure manual | S56 | Footpedal switch |
| K13 | Relay welding current | S64 | Limit switch seam end |
| K46 | Relay seam beginning | S70 | Key switch setting-up mode |
| K66 | Timing relay welding pressure manual | S105 | Step / Auto |
| K101 | Step / Auto | Y10 | Solenoid valve welding pressure |
| K102 | Relay Footpedal | Y11 | Solenoid valve body clamps |
| K103 | Relay welding Air Pressure | S32 | Switch welding current |
| S25 | Flow switch cooling water | S39 | Switch welding pressure manual |

Änderung :		Gezeichnet: 13.03.09 N.U	
CM L1		Geprüft: 13.03.09 E.N	
		Gesehen :	
CAN MAN Hiltl Switzerland		21.12.98003	



- AG Electronic card ignition transformer
- Q2 Stepswitch transformer grad
- R20 Base load resistor
- T2 Welding transformer
- V1 Thyristor welding current

Änderung:	Gezeichnet: 13.03.09 N.L.U
	Geprüft: 13.03.09 E.N
	Gesehen:
CM L1	
CAN MAN Hallwil Switzerland	
21.12.98006	