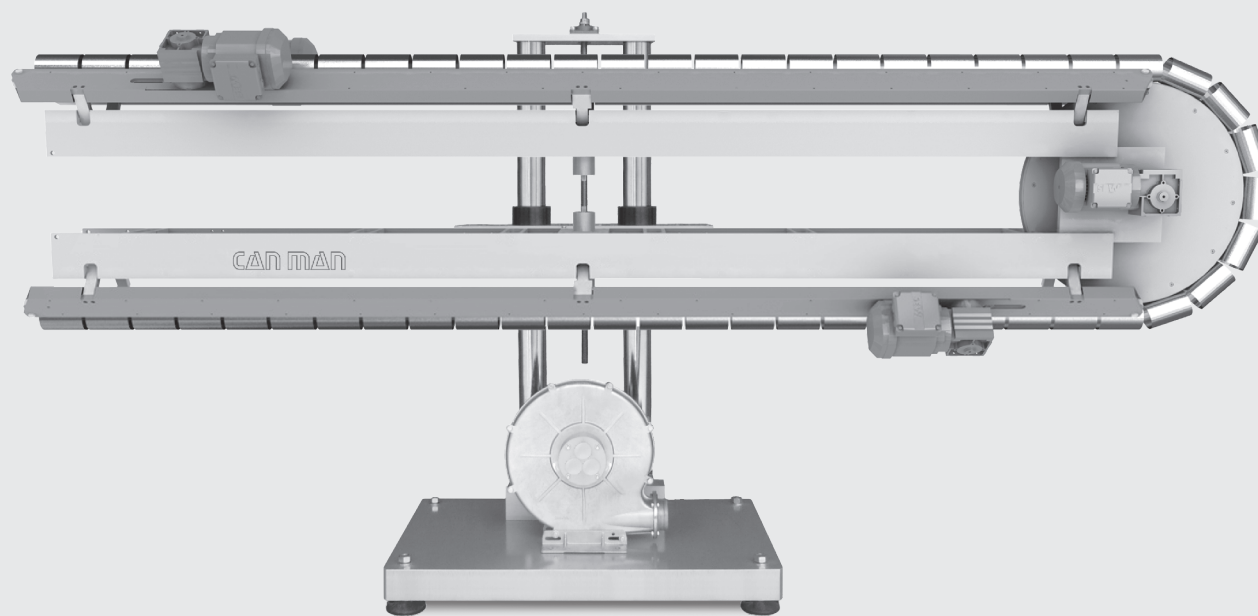


PowerCURE 2™

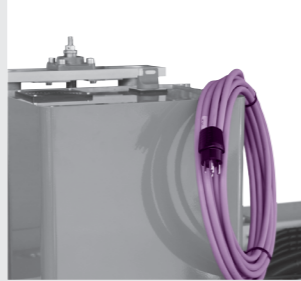
CAN MAN



WWW.POWERCURE.CANMAN.CH

PowerCURE 2™ at a glance

- 1 Up to 80 % energy costs savings compared to common gas or other heat creating systems.
- 2 Up to 70 % over all space saving compared to common gas systems.
- 3 High safety standard, user-friendly and practically maintenance free.
- 4 Modular construction in 3 m-modules allows installations to any welding machine, no matter slow or fast, seam up or on bottom.



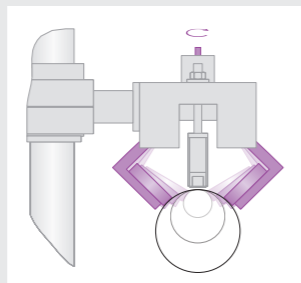
Plug & Play

The compact induction curing unit only needs electricity and works practically maintenance-free. It is easy to install and operate. You are creating zero CO₂ and NO_x emissions and the handling of gas supplies in your can assembly plant belongs to the past.



Modular Design

Each „generator – coil“ – unit offers individual power adjustments via a newly designed and easy to understand HMI (touchscreen) and thanks to their small size up to 4 of these units can be fitted into a 3 m PowerCURE™-module.



Fast Format Change

Both conveyors are linked together and adjusted via a centralized spindle mechanism. Whatever diameter you adjust, the gap to the induction coil remains the same. A canbody height change doesn't require any interaction except a speed and power change (if not already connected with a Can Man welder).



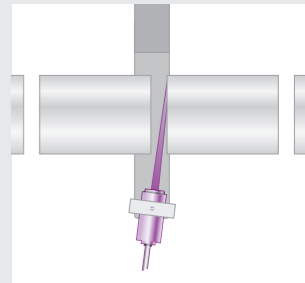
Air Conditioning as a Standard

To ensure reliable operation in all environments, the optional air cabinet protects the system against humidity, dust and heat.



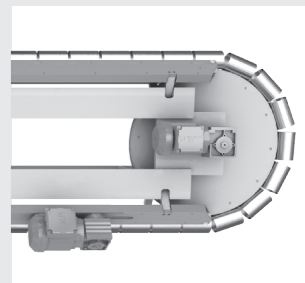
Optional Temperature Control

The IR (infrared) sensor can be placed between every 3 meter - module in order to monitor the temperature after every section. If a temperature variation is detected a warning is indicated and a stop of production will be initiated.



PowerCURE U-Shape upon request

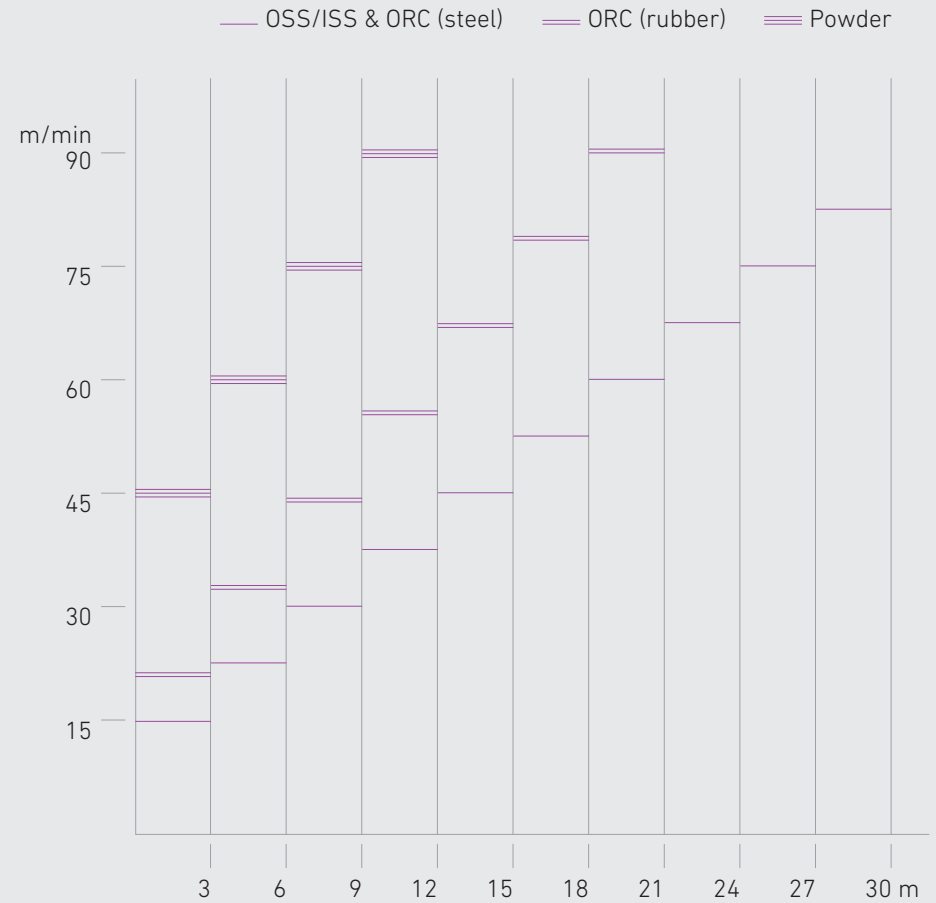
Besides another 50% space saving, the clue is that the canbodies return back to the welder where the operator can check the welded, lacquered and cured bodies instantly, without the need to walk around the equipment. U-shape is only needed for thick lacquer applications where a long curing time is required.



Technical Data

Induction Curing System

Production Output	up to 90 meter/min
Body Sizes	min. Ø 45 x h 50 mm max. Ø 330 x h 700 mm
Sheet Thickness	0.10 - 0.70 mm



Can Man AG

Muelisacker 221 T +41 62 777 444 0 sales@canman.ch
CH-5705 Hallwil F +41 62 777 444 1 www.canman.ch