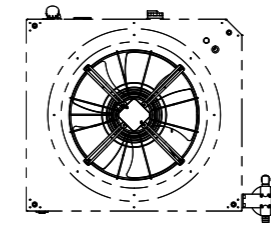
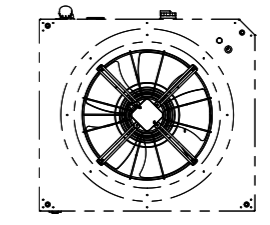


Chiller cool water



Chiller warm water



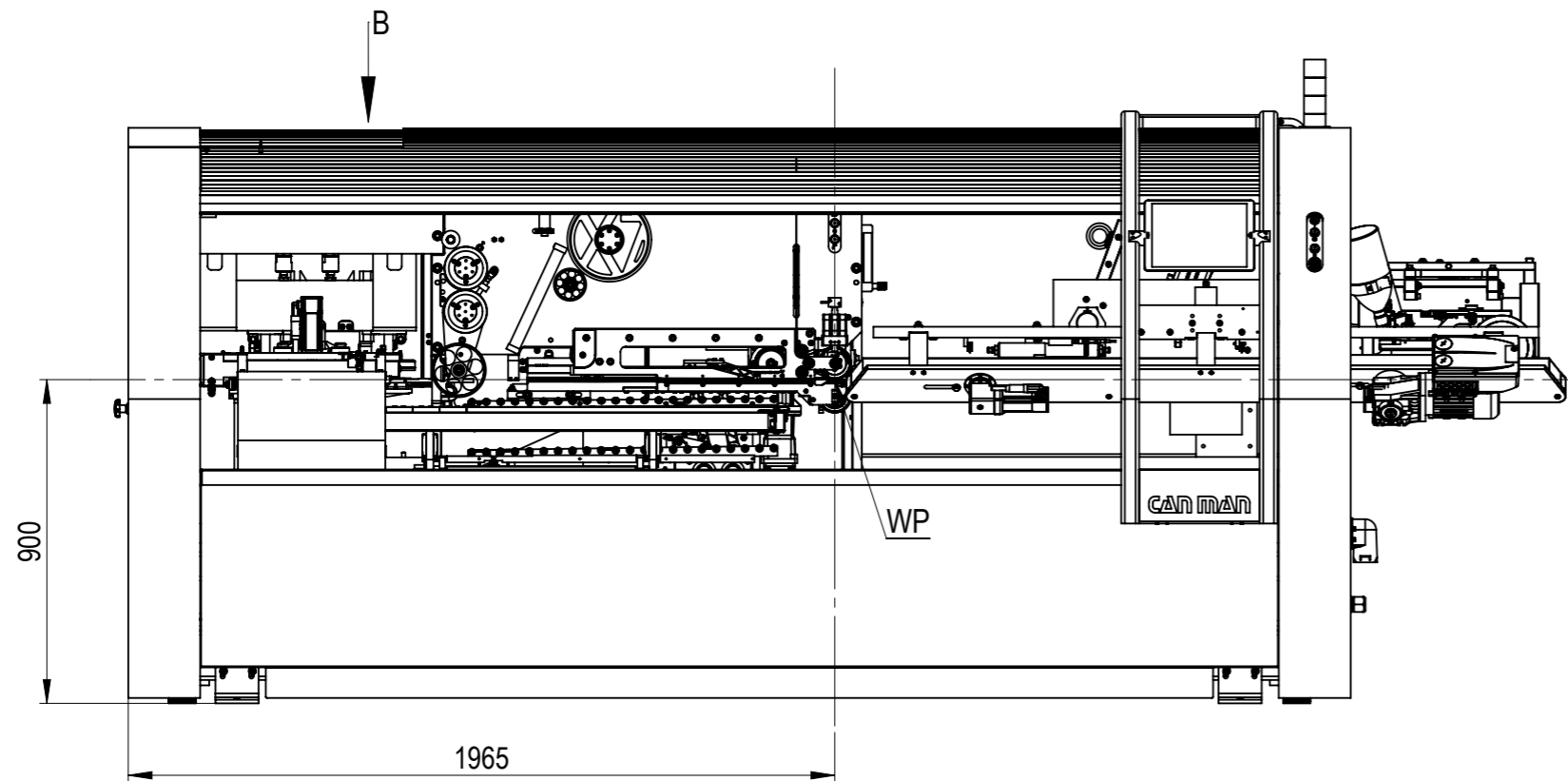
Machine colour:
RAL 9006 = white-aluminium, bright
RAL 4008 = signal violet

Ambient: +5°C ... +45°C
Relative humidity: max. 85%

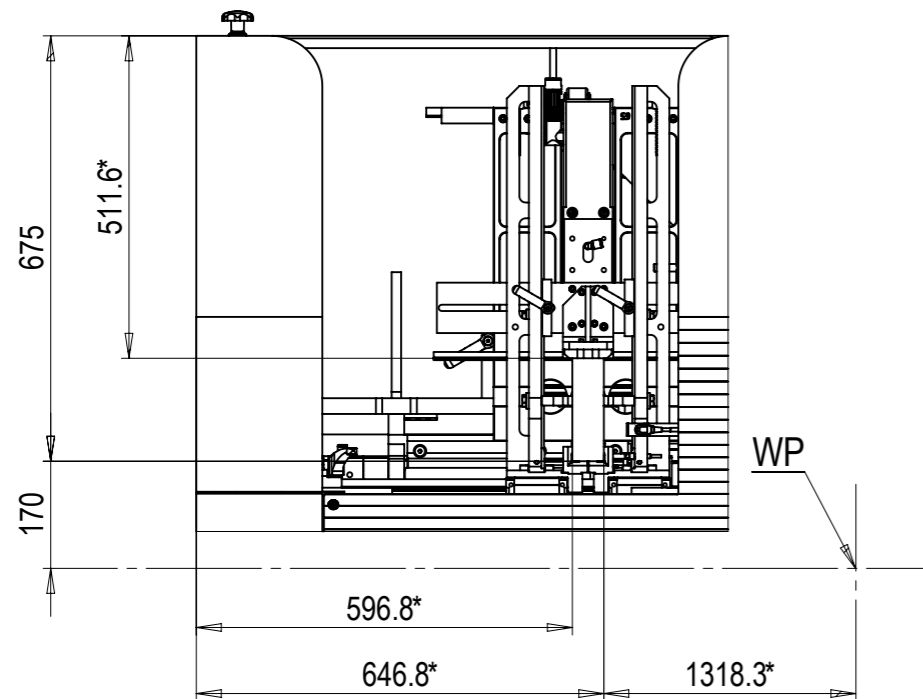
min floor loading: 1500 kg/m²

WP ≙ Welding point

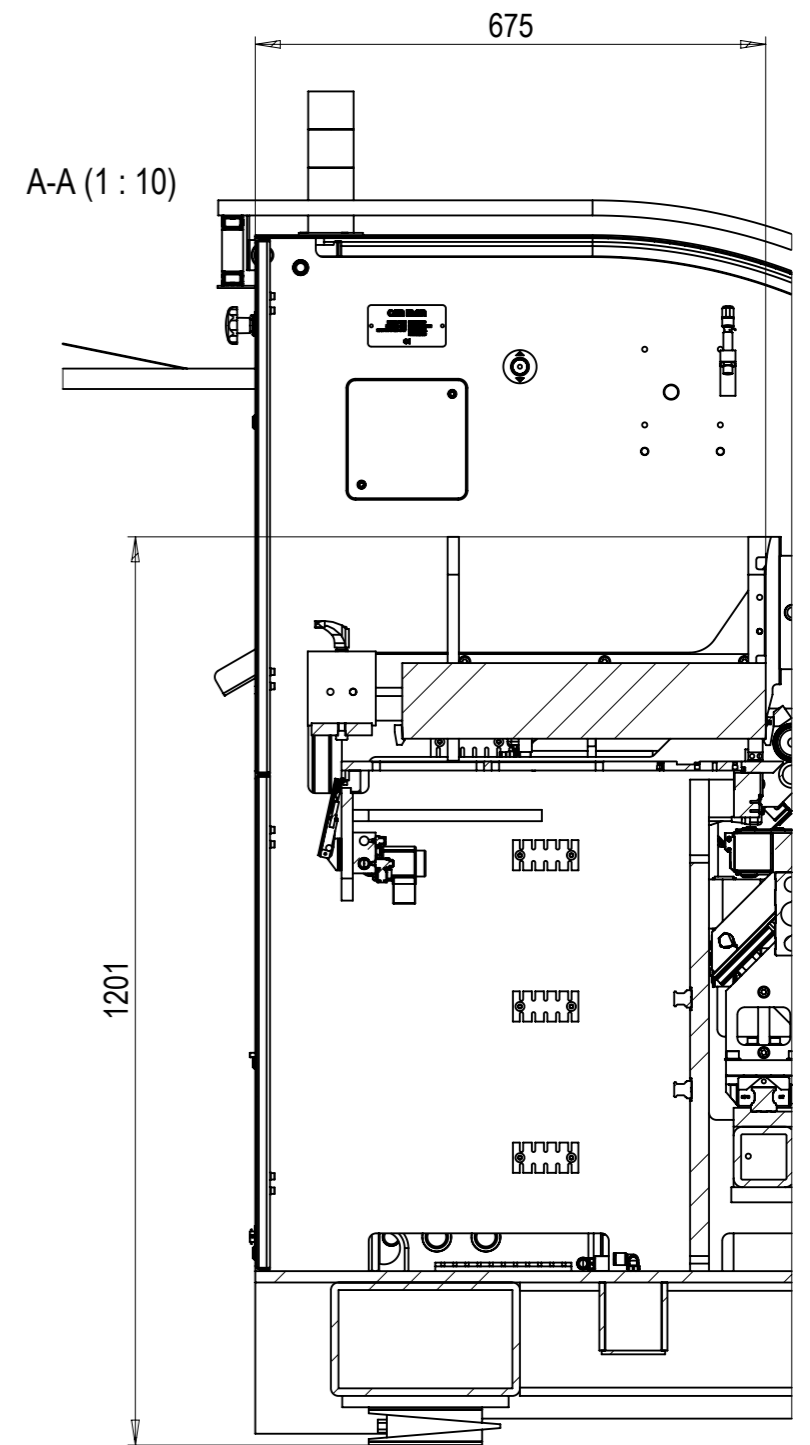
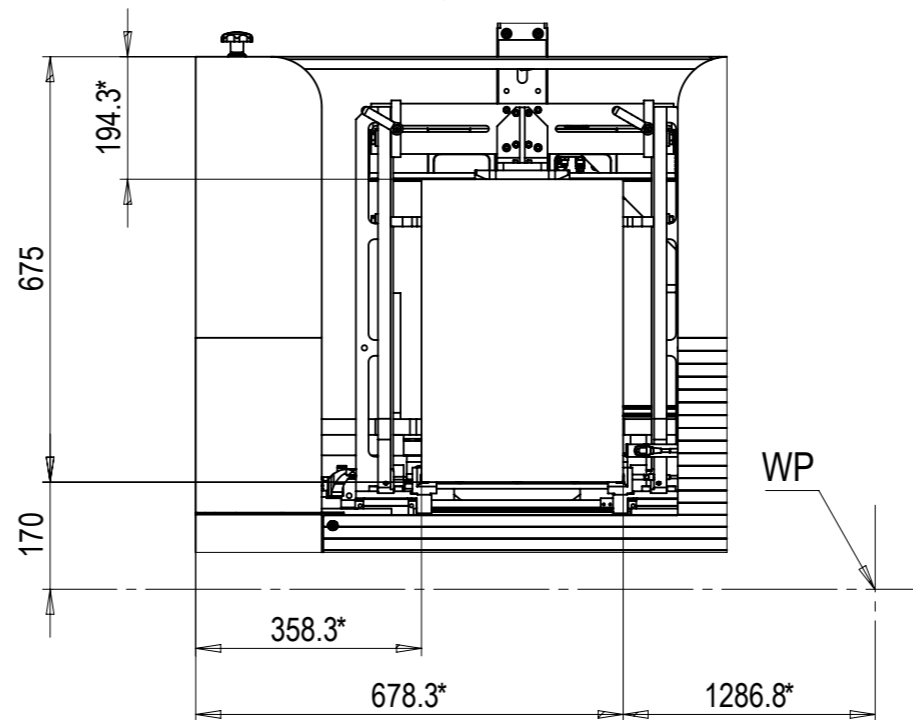
	A Electrical Supply	B Water inlet	C Water outlet	D Air Supply	Material:	Oberfläche:	Bemerkung:	
X7	3x400 VAC+Ground Power: 35 kVA Control voltage: 24 VDC Fuse: 3 x 63 A	2x Connection G 3/4" 2x Pressure min 6 bar	2x Connection G 3/4" 2x Backpressure max 1 bar	Connection: G 1/2" Pressure min: 6 bar	Dimension:	Masse in kg:	Technical changes reserved !	
Chiller	warm water	3x400VAC+Ground,50/60Hz Power: 5.3 kW 3x460VAC+Ground,50/60Hz Power: 11.3 kW	Volume min 35 l/min Set temp. min 25°C Environment temp. 10...43° Cooling power min 12 kW	Air Consumption 51 m ³ /h	Bezeichnung: X7 WeldCENTER™ Layout		Schutzvermerk nach DIN 34 beachten.	
	cool water	3x400VAC+Ground,50/60Hz Power: 5.3 kW 3x460VAC+Ground,50/60Hz Power: 11.3 kW	Volume min 20 l/min Set temp. min 15°C Environment temp. 10...43° Cooling power min 12 kW	Air Consumption 51 m ³ /h	Format: A3	Blatt: 1 / 2	Masstab Gezeichnet PB 29.12.2016 1:30 Geprüft DM 03.06.2020 Filemaker-Nr 017000 zuletzt gespeichert am: Mittwoch, 3. Juni 2020 14:54:36	
					CAN MAN		17_00_00000	-



B (1 : 12)
Format $\Delta \varnothing 52 \times 50$



B (1 : 12)
Format $\Delta \varnothing 153 \times 320$



* Δ Depending on the format of the blank

WP Δ Welding point

Material:	Oberfläche:	Bemerkung: Technical changes reserved !		
Dimension:	Masse in kg: kg			
Bezeichnung: X7 WeldCENTER™ Layout		Schutzvermerk nach DIN 34 beachten.		
		Masstab	Gezeichnet	PB 29.12.2016
		1:20	Geprüft	DM 03.06.2020
		Filemaker-Nr 017000		
		Format: A3	Blatt: 2 / 2	zuletzt gespeichert am: Mittwoch, 3. Juni 2020 14:54:36
CAN MAN		17_00_00000		-