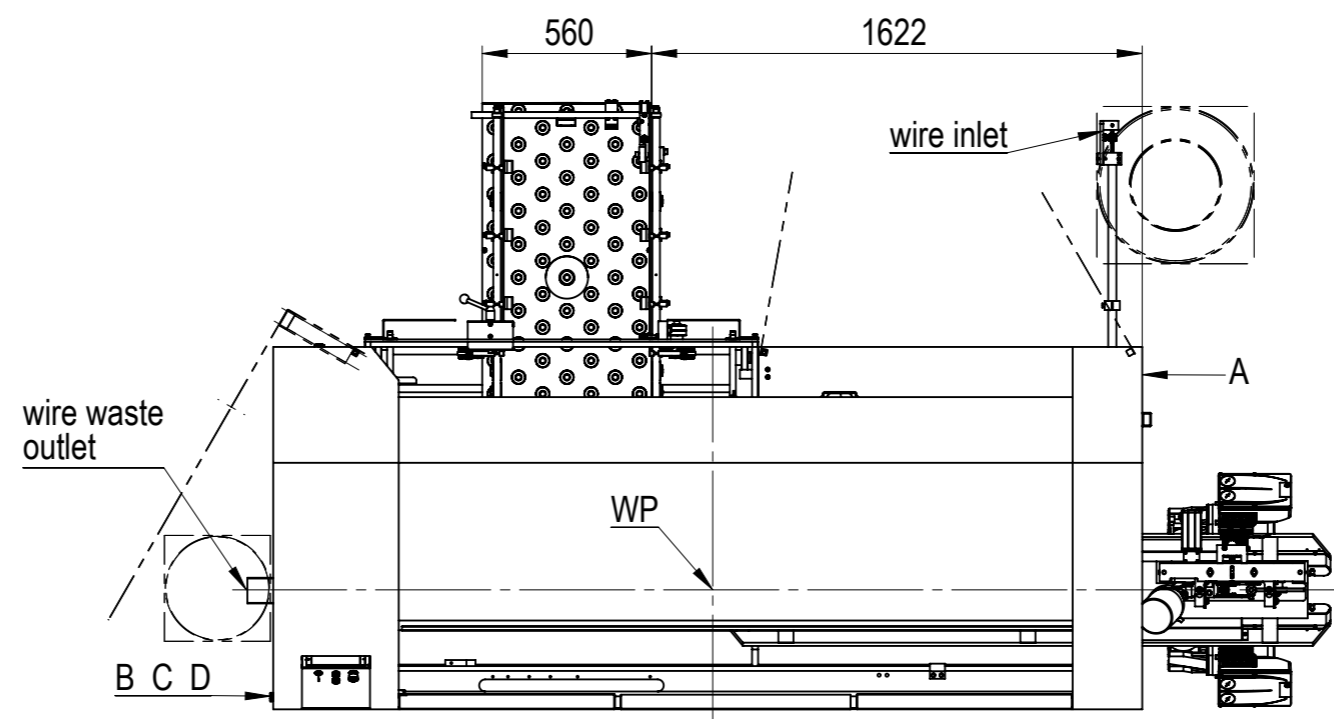
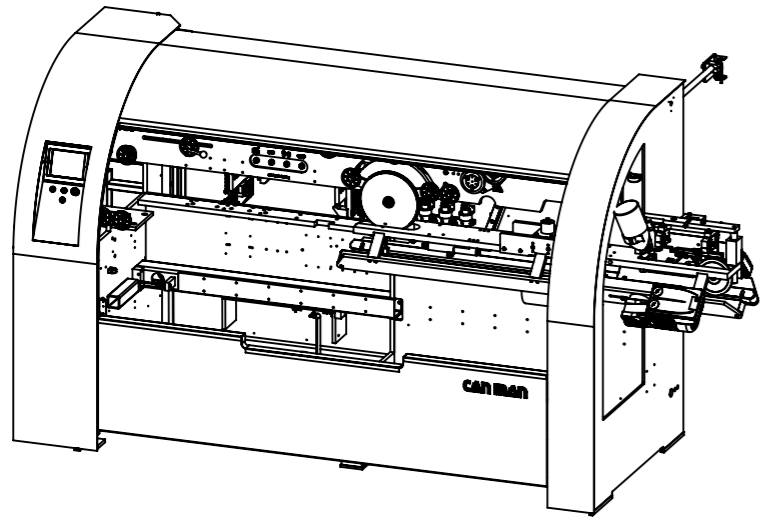


Chiller cooling water (optional)




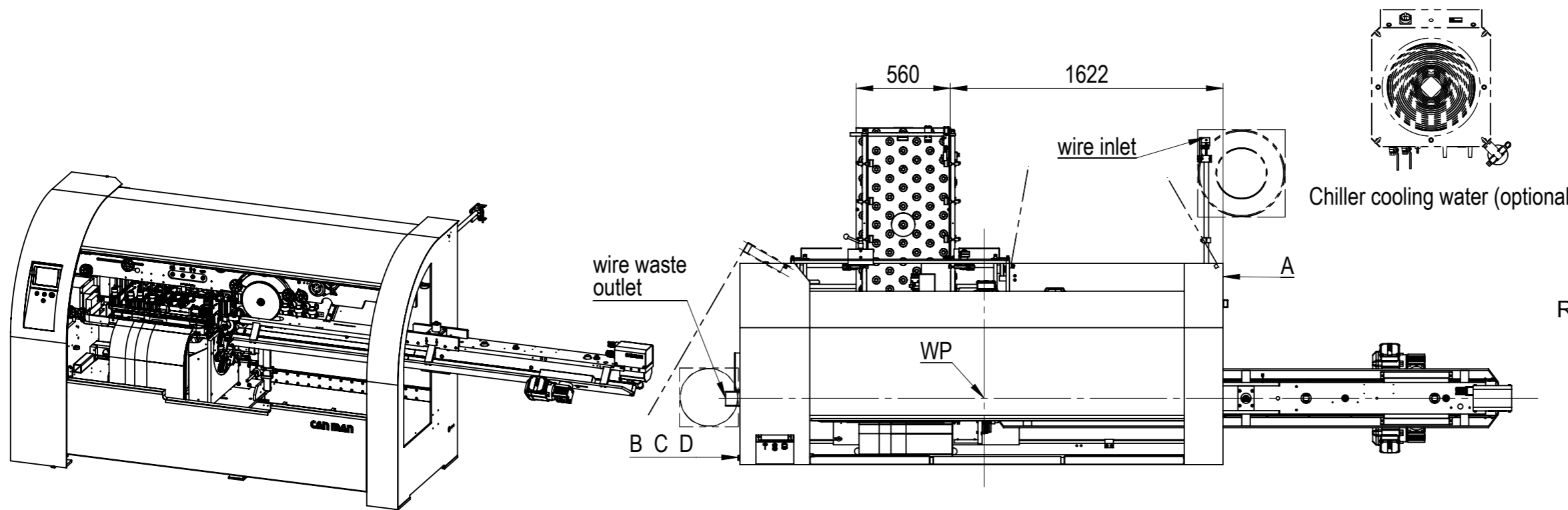
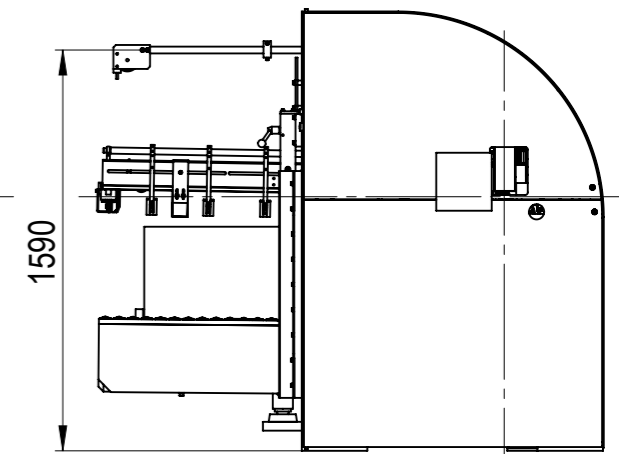
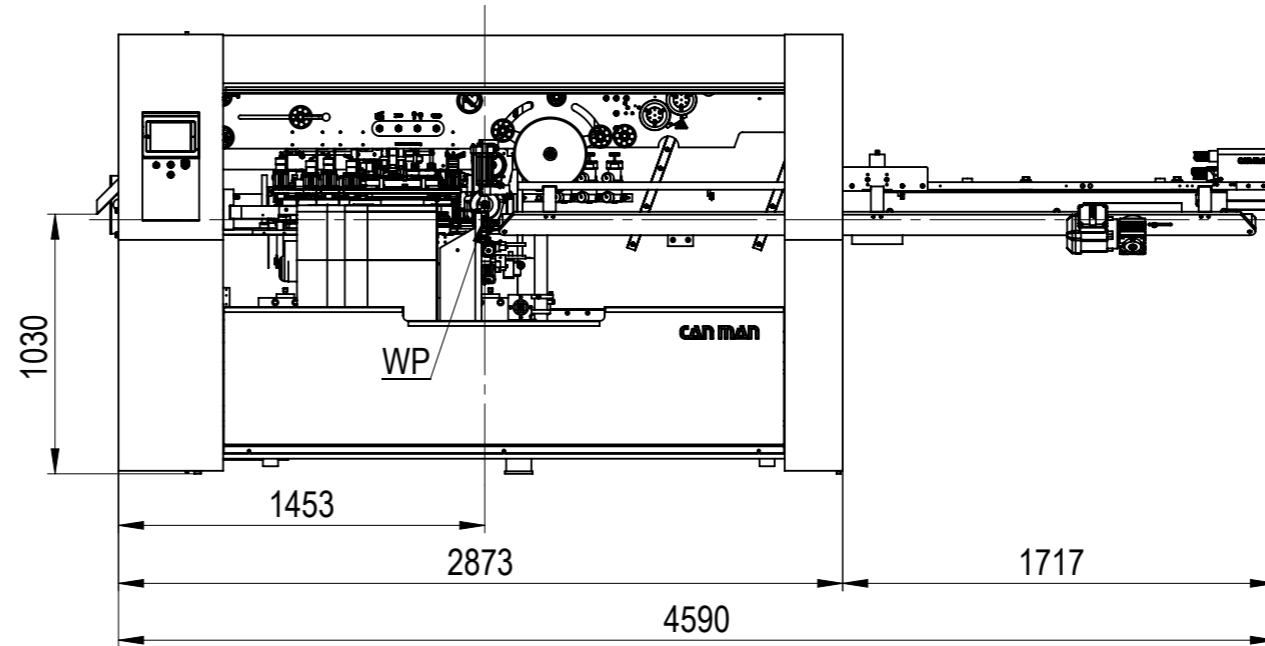
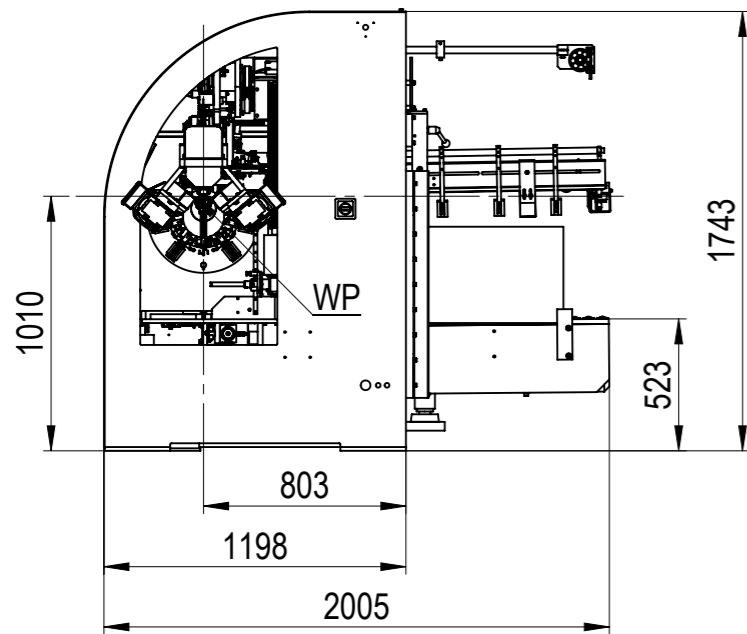
Machine colour:
RAL 9006 = white-aluminium, bright
RAL 4008 = signal violet

Ambient: +5°C ... +45°C
Relative humidity: max. 85%

min floor loading: 1500 kg/m²

WP ≙ Welding point

	A	B	C	D	Material:	Oberfläche:	Bemerkung:
	Electrical Supply	Water inlet	Water outlet	Air Supply	Dimension:	Masse in kg:	Technical changes reserved !
X8	3x400 VAC+N+Ground Power: 15 kVA Control voltage: 24 VDC Fuse: 3 x 32 A	Connection G 1/2" Pressure min 6 bar Cooling power min 10 kW	Connection G 3/4" Backpressure max 1 bar	Connection: G 1/2" Pressure min: 5 bar	Bezeichnung:	kg	Schutzvermerk nach DIN 34 beachten.
Chiller	Electrical Supply 3x400 VAC+N+Ground Power: 8.8 kW Cooling power 12 kW	Volume min 20 l/min Set temp. min 25°C Environment temp. 10...43°		Air Consumption 25 m ³ /h	X8 WeldCENTER™ with lifttable		Masstab Gezeichnet PB 29.01.2013 1:25 Geprüft DM 03.05.2019 Filemaker-Nr 002952
					Format: A3		Blatt: 4 / 4
CAN MAN					zuletzt gespeichert am: Freitag, 3. Mai 2019 16:22:25		18_00_00001
							-



Machine colour:
 RAL 9006 = white-aluminium, bright
 RAL 4008 = signal violet

Ambient: +5°C ... +45°C
 Relative humidity: max. 85%

min floor loading: 1500 kg/m²

WP ≙ Welding point

	A	B	C	D	Material:	Oberfläche:	Bemerkung:
	Electrical Supply	Water inlet	Water outlet	Air Supply	Dimension:	Masse in kg:	Technical changes reserved !
X8 +PowerCURE	3x400 VAC+N+Ground Power: 25 kVA Control voltage: 24 VDC Fuse: 3 x 40 A	Connection G 1/2" Pressure min 6 bar Cooling power min 12 kW	Connection G 3/4" Backpressure max 1 bar	Connection: G 1/2" Pressure min: 5 bar	Bezeichnung: X8 WeldCENTER™ with liftable & PowerCURE	kg	Schutzvermerk nach DIN 34 beachten.
Chiller	Electrical Supply 3x400 VAC+N+Ground Power: 8.8 kW Cooling power 12 kW	Volume min 20 l/min Set temp. min 25°C Environment temp. 10...43°		Air Consumption 25 m ³ /h			Masstab Gezeichnet PB 29.01.2013 1:30 Geprüft DM 03.05.2019 Filemaker-Nr 002952
						Format: A3	Blatt: 2 / 4 zuletzt gespeichert am: Freitag, 3. Mai 2019 16:22:25
					CAN MAN		18_00_00001 -