

- cooling system options
1. Heat exchanger with central cooling system (provided by customer)
  2. Heat exchanger with chiller (provided by customer) according specifications in table
  3. Heat exchanger with chiller (provided by Can Man)

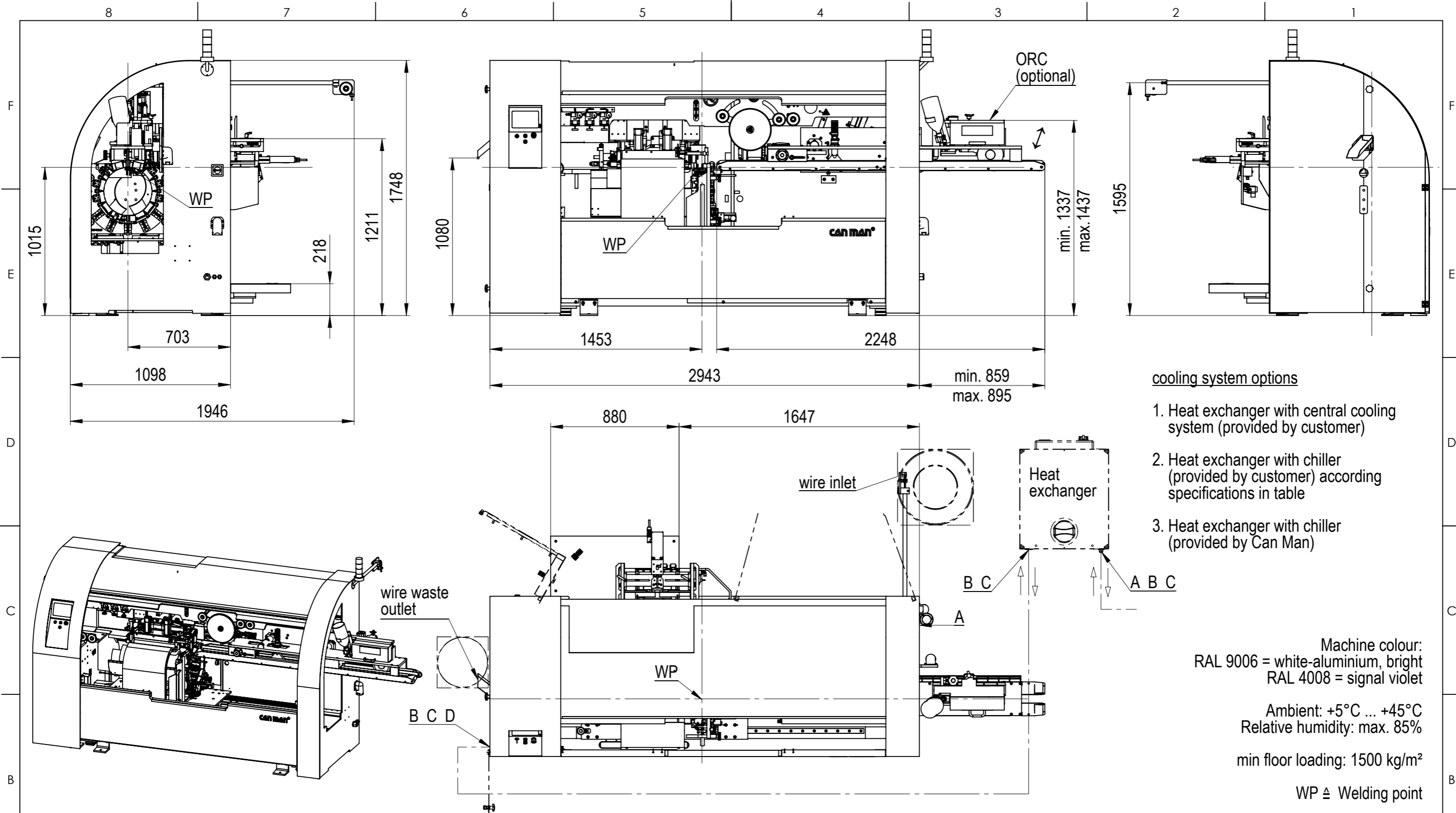
Machine colour:  
 RAL 9006 = white-aluminium, bright  
 RAL 4008 = signal violet

Ambient: +5°C ... +45°C  
 Relative humidity: max. 85%

min floor loading: 1500 kg/m<sup>2</sup>

WP ≙ Welding point

	<b>A Electrical Supply</b>	<b>B Water inlet</b>	<b>C Water outlet</b>	<b>D Air Supply</b>	Material:	Oberfläche:	Bemerkung:
<b>X8</b>	3x400 VAC+Ground Power: 35 kVA Control voltage: 24 VDC Fuse: 3 x 32 A	Connection G 1/2" Pressure min 6 bar	Connection G 3/4" Backpressure max 1 bar	Connection: G 1/2" Air Pressure min: 5 bar Air Consumption: 42 m <sup>3</sup> /h	Dimension:	Masse in kg:	<b>Technical changes reserved !</b>
<b>Heat exchanger</b>	3x400VAC, 50Hz: 1.6 kW 3x460VAC, 60Hz: 2.6 kW	Connection G 1" (to X8)	Connection G 1" (to X8)		Bezeichnung: <b>X8 WeldCENTER™ with liftable</b>		Schutzvermerk nach DIN 34 beachten.
		Connection G 3/4" (to chiller)	Connection G 3/4" (to chiller)				Masstab <b>1:25</b>
<b>Chiller</b>	3x400VAC+Ground, 50Hz Power: max. 8.2 kW 3x400VAC+Ground, 60Hz Power: 9.2 kW	Volume min 35 l/min Set temp. min 15°C Environment temp. 10...43° Cooling power min. 10 kW		Air Consumption (fan): 4'300 m <sup>3</sup> /h			Format: <b>A3</b> Blatt: <b>1/2</b> zuletzt gespeichert am: Freitag, 21. April 2023 14:07:51
					<b>CAN MAN</b>		<b>18_00_40000</b>



- cooling system options**
1. Heat exchanger with central cooling system (provided by customer)
  2. Heat exchanger with chiller (provided by customer) according specifications in table
  3. Heat exchanger with chiller (provided by Can Man)

Machine colour:  
 RAL 9006 = white-aluminium, bright  
 RAL 4008 = signal violet

Ambient: +5°C ... +45°C  
 Relative humidity: max. 85%

min floor loading: 1500 kg/m<sup>2</sup>

WP ≙ Welding point

	<b>A Electrical Supply</b>	<b>B Water inlet</b>	<b>C Water outlet</b>	<b>D Air Supply</b>	Material:	Oberfläche:	Bemerkung: <b>Technical changes reserved !</b>
<b>X8</b>	3x400 VAC+Ground Power: 35 kVA Control voltage: 24 VDC Fuse: 3 x 32 A	Connection G 1/2" Pressure min 6 bar	Connection G 3/4" Backpressure max 1 bar	Connection: G 1/2" Air Pressure min: 5 bar Air Consumption: 42 m <sup>3</sup> /h	Dimension:	Masse in kg:	
<b>Heat exchanger</b>	3x400VAC, 50Hz: 1.6 kW 3x460VAC, 60Hz: 2.6 kW	Connection G 1" (to X8)	Connection G 1" (to X8)		<b>X8 WeldCENTER™</b> with nonstop downstacker		Schutzvermerk nach DIN 34 beachten.
		Connection G 3/4" (to chiller)	Connection G 3/4" (to chiller)				Masstab <b>1:25</b>
<b>Chiller</b>	3x400VAC+Ground, 50Hz Power: max. 8.2 kW 3x400VAC+Ground, 60Hz Power: 9.2 kW	Volume min 35 l/min Set temp. min 15°C Environment temp. 10...43° Cooling power min. 10 kW		Air Consumption (fan): 4'300 m <sup>3</sup> /h	<b>CAN MAN</b>		Format: <b>A3</b> Blatt: <b>2 / 2</b> zuletzt gespeichert am: Freitag, 21. April 2023 14:07:51
							<b>18_00_40000</b> -